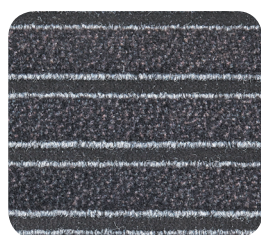


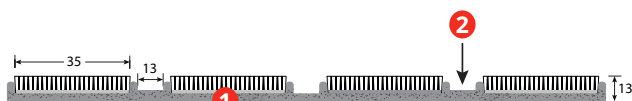
Quick**MAT**-TILE



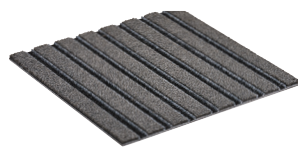
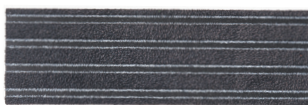
8550 / 8555
Anthracite



8551 / 8556
Grey



1 Polyamide scraping and absorbing insert 2 Collecting zone



23,5 x 75 cm

45 x 45 cm

DESCRIPTION

QUICKMAT-TILE is an entrance mat in plank format. It consists of alternating scraping and drying polyamide strips together with a dirt collection zone. Backing with tackified repositionable adhesive. Available in 23.5 x 75 cm or in 45 x 45 cm.

The tackified adhesive backing will facilitate the Quickmat Tile installation.

On the back of the plank, an arrow indicates the laying direction and, in particular, avoids differences of appearance when laying.

Dimensions : 23,5 x 75 cm or 45 x 45 cm

Total weight : 5,7 kg/m²

Water absorption : 4.3 L/m²

Thickness : 14 mm

Packing : Kit for 1m²

Sublayer : Bitumen

REFERENCES

- **8550**
QUICKMAT-TILE - 23,5 x 75 CM ANTHRACITE - KIT 1M²
- **8551**
QUICKMAT-TILE - 23,5 x 75 CM GREY - KIT 1M²
- **8555**
QUICKMAT-TILE - 45 X 45 CM ANTHRACITE - KIT 1M²
- **8556**
QUICKMAT-TILE - 45 X 45 CM GREY - KIT 1M²

USE

Indoor - ZONE 2
Pedestrian traffic : frequent
(up to 500 pedestrians/day)

MATERIAL

Backing : Bitumen with polyester
Insert : Tuft Polyamide 6.6

Fire Certificate : Cfl-S1

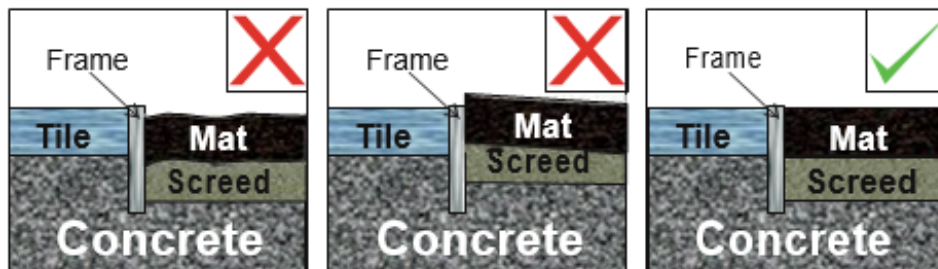
INSTALLATION PROCESS

It is not necessary to glue the tiles down thanks to the adhesive system. It is recommended to secure them either with a light Aluminium frame to prevent overall movement of the mat.

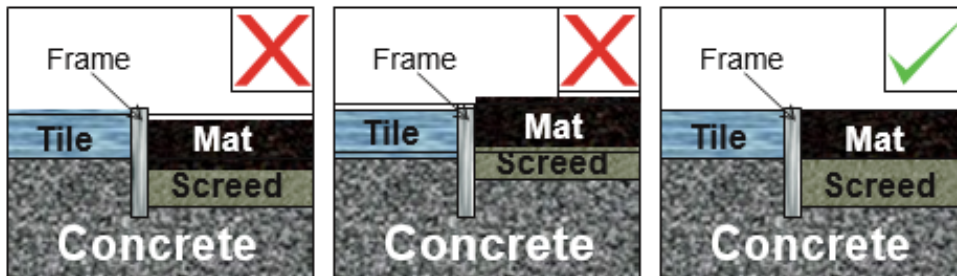
Preparation prior to installation :

It is important to acclimatize the Quickmat-Tile for at least 24 hours prior to installation by placing them, boxes opened up, on a flat surface in the room in which they will be installed. If possible, keep the room closed to allow for an ambient temperature of between 15°C and 25°C.

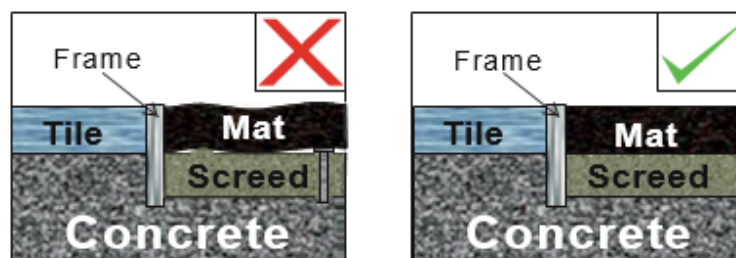
- The screed needs to be even and level with a uniform depth across the full area of the recess within 1mm.



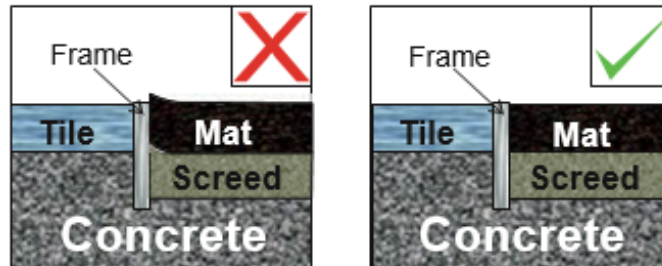
- The depth of the recess should be within a tolerance of 1mm of the thickness of the mat to be installed. If the mat well is any deeper, a non-elastic underlay must be inserted to reduce the depth to the suitable height of 13 mm to 14 mm.



- All debris needs to be removed from the screed prior to installation. Debris includes tile cement and grout left behind by contractors, temporary fasteners used to anchor frames or other structures, objects or materials that would render the screed surface uneven or irregular. The recess should be free of dust and therefore vacuum cleaning prior to installation is recommended, using a brush is insufficient.



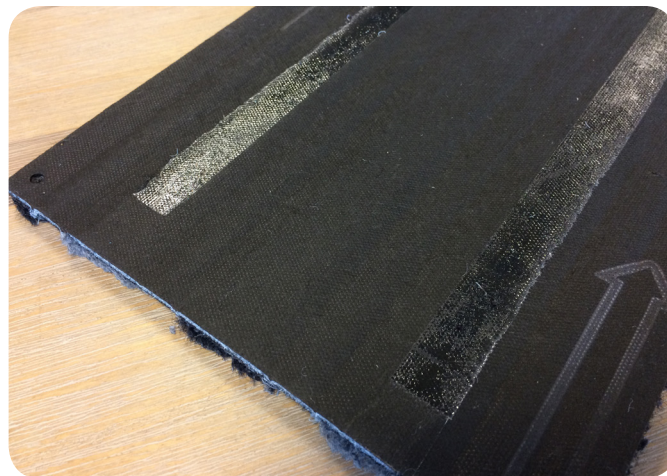
- Mats cannot be installed in active entrances as the recess needs to remain clean for adhesives to bond properly. The unnecessary disturbance of the process of the mat installation could hinder the outcome of the quality of the installed mat. There are some steps that are very time frame specific such as the application of adhesives and the subsequent bonding of the mat to the screed. Any disruptions during these critical stages could be disastrous. Other stages are very sensitive to movement of the mat such as when marking and trimming a mat to fit a recess.



- Mats cannot be installed over wet or uncured screeds due to the presence of excessive moisture that would render the bonding agents ineffective.

Gluing the mat inside the recess :

The hot-melt adhesive, placed upside down of the tile, is repositionable and allows good adhesion to the floor, especially in case of heavy traffic with wheels.



Cutting the tiles :

To finish the room, the carpet tiles will in most cases have to be cut to measure by means of a Romus cutter knife. Quick Mat-Tile are cut on the backing.



MAINTENANCE

The care and maintenance is essential to maintain the durability and appearance of the mat. Soiling and general wear has a negative impact on the appearance of the entrance mat and should be prevented by instituting an effective cleaning program.

Avoid excessive use of cleaning products. If they are used, then ensure they are washed out of the mat thoroughly as any residue can attract dirt.

Vacuuming

Regular vacuuming with a sufficiently powerful vacuum cleaner and brush is essential to maintain the condition of the mat. Heavy traffic areas should be vacuumed more intensively than lighter traffic areas.

Stain removal

Stains should be removed immediately (before it dries) with a neutral stain remover. Chewing gum can be removed with ice by turning the gum to a solid and then removing it with a knife or scraper.

WHAT CAN GO WRONG ?

When I put 2 tiles together in the same installation, the colour is different between them.

The reason for this is that one of the tiles has been turned around 180 degrees. It is important that the arrows on the backing are matched for both tiles in the same direction, which will ensure a colour match.

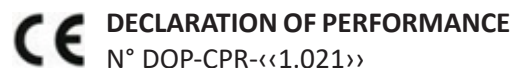
I have a piece that is damaged on the mat, what now ?

Simply remove the damaged tile and replace with a new tile.

When does it not work as well as it should ?

Tests conducted by a certified testing laboratory have shown that a total of 7m is required before feet are completely dry and clean by walking over the mat. This can be achieved with a combination of outdoor matting like Super Scraper as realistically, not all buildings have the available space for one mat of this size.

CE declaration



1. Unique identification code of the product-type or product family : 067 010 008 500
2. Type, batch or serial number or any other element allowing identification of the construction product: Entrance Matting.
3. Intended uses of the construction product, in accordance with the applicable harmonised technical specification, as foreseen by the manufacturer: Use as entrance floor covering(s) within a building according to the manufacturer's specifications and installation practices in accordance with EN 14041.
4. Where applicable, name and contact address of the authorised representative (distributor, importer) : ROMUS - ZA Les Pouards - 13/15 rue du Taillefer - 91160 CHAMPLAN - FRANCE
5. System of assessment and verification of constancy of performance of the construction product: AVCP system 4.
6. In case of the declaration of performance concerning a construction product covered by a harmonised standard: system 4 Not applicable.
7. In case of the declaration of performance concerning a construction product for which a European Technical Assessment has been issued: not applicable.
8. Declared performance :

Essential characteristic	Performance	Harmonised technical specification	Essential characteristic	Performance	Harmonised technical specification
Reaction to fire EN 13501-1		EN 14041: 2004 AC : 2006	Electrical behaviour (dissipative) EN 1081 or ISO 10965	Not applicable	EN 14041 : 2004 AC : 2006
Content of penta- chlorophenol EN 12673			Electrical behaviour (conductive) EN 1081 or ISO 10965	Not applicable	
Formaldehyde emissions ENV 717-1 or EN 717-2			Thermal conductivity EN 12524 or EN 12667	Not applicable	
Slip resistance «EN 13893»			Water-tightness EN 13553	Not applicable	
Electrical behaviour (antistatic) EN 1815 or ISO 6356	Not applicable			Not applicable	

9. The performance of the product identified in points 1 and 2 is in conformity with the declared performance in point 9. This declaration of performance is issued under the sole responsibility of the manufacturer identified in point 4